



DEEP CYCLE
SERIES: 4500
MODEL: S-500EX

BATTERY ENGINEERING
 WWW.ROLLSBATTERY.COM MADE IN CANADA

BATTERY TYPE: 6 VOLTS

DIMENSIONS:

LENGTH	318 MM	12 1/2 INCHES
WIDTH	181 MM	7 1/8 INCHES
HEIGHT	425 MM	16 3/4 INCHES

WEIGHTS:

WEIGHT DRY	45 KG	100 LBS.
WEIGHT WET	59 KG	130 LBS.

CONTAINER CONSTRUCTION:

CONTAINER: HIGH DENSITY POLYETHYLENE

TERMINALS: FLAG

COVER: HIGH DENSITY POLYETHYLENE

HANDLES: ROPE

PLATES:

POSITIVE PLATE DIMENSION:

HEIGHT	273 MM	10.750 INCHES
WIDTH	143 MM	5.625 INCHES
THICKNESS	6.73 MM	0.265 INCHES

CELLS: 3 **PLATES/CELL:** 11

POSITIVE PLATE ENVELOPED BY VERTICAL SLYVER GLASS MAT

NEGATIVE PLATE DIMENSION:

HEIGHT	273 MM	10.750 INCHES
WIDTH	143 MM	5.625 INCHES
THICKNESS	4.70 MM	0.185 INCHES

SEPARATOR:

THICKNESS 3 MM 0.105 INCHES

INSULATION:

GLASS MAT 1 MM 0.020 INCHES

CAPACITY:

CRANK AMPS:		
COLD (CCA)	0°F / -17.8°C	845
MARINE (MCA)	32°F / 0°C	1056

ELECTROLYTE RESERVE:

ABOVE PLATES 95 MM 3.75 INCHES

RESERVE CAPACITY:

RC @ 25A 768 MINUTES

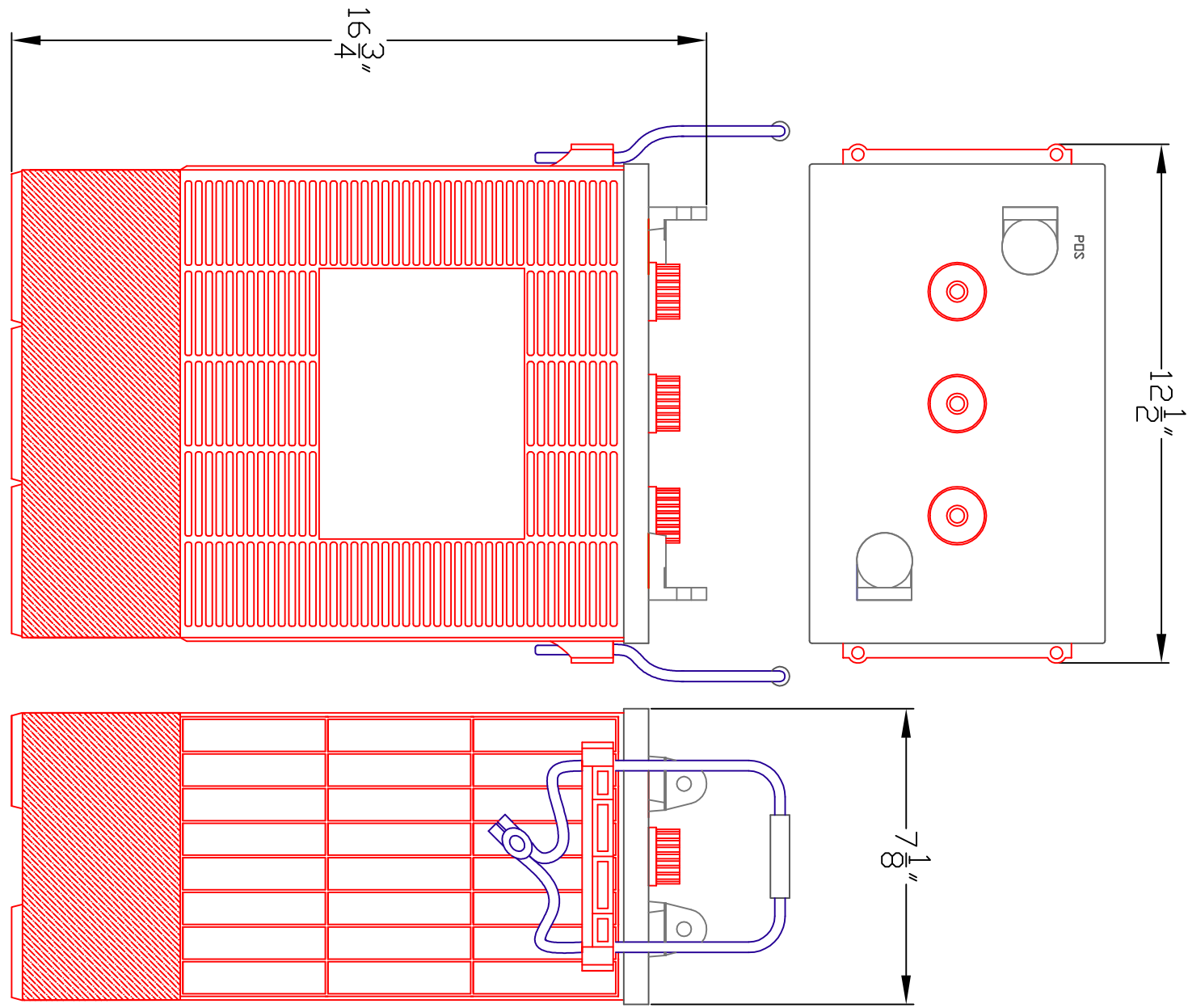
20 HR RATE: 357

	HOUR RATE	SPECIFIC GRAVITY	CAP / AH	CURRENT / AMPS
CAPACITY @	100 HOUR RATE	1.280 SP. GR.	503	5.03
CAPACITY @	72 HOUR RATE	1.280 SP. GR.	475	6.59
CAPACITY @	50 HOUR RATE	1.280 SP. GR.	439	8.78
CAPACITY @	24 HOUR RATE	1.280 SP. GR.	371	15.5
CAPACITY @	20 HOUR RATE	1.280 SP. GR.	357	17.9
CAPACITY @	15 HOUR RATE	1.280 SP. GR.	332	22.1
CAPACITY @	12 HOUR RATE	1.280 SP. GR.	311	25.9
CAPACITY @	10 HOUR RATE	1.280 SP. GR.	296	29.6
CAPACITY @	8 HOUR RATE	1.280 SP. GR.	278	34.8
CAPACITY @	6 HOUR RATE	1.280 SP. GR.	253	42.2
CAPACITY @	5 HOUR RATE	1.280 SP. GR.	239	48
CAPACITY @	4 HOUR RATE	1.280 SP. GR.	221	55
CAPACITY @	3 HOUR RATE	1.280 SP. GR.	200	67
CAPACITY @	2 HOUR RATE	1.280 SP. GR.	171	86
CAPACITY @	1 HOUR RATE	1.280 SP. GR.	121	121



1 STATION RD SPRINGHILL, NOVA SCOTIA CANADA B0M 1X0 1.800.681.9914

Jan-13
S-500EX



PART NUMBER: S500EX

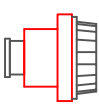
WEIGHT WET: 130 LB / 59 KG

WEIGHT DRY: 100 LB / 45 KG

CAPACITY: 357 AH 20HR RATE

VOLTAGE: 6 V

OVERALL DIMENSIONS: 12 1/2 X 7 1/8 X 16 3/4 "



MAX HEIGHT WITH OPTIONAL HYDROCAPS 17.41"

TITLE:	S500EX
DESCRIPTION:	6V DEEP CYCLE SOLAR SERIES 4500
CONTACT INFO:	<p>WEB: WWW.ROLLSBATTERY.COM E-MAIL: SALES@ROLLSBATTERY.COM PHONE: 1-800-681-9914</p>
SCALE:	1" = 4" NDT, TD SCALE
Drawn by:	P. FERRON
Approved By:	JD SURRETTE
DATE:	JAN-2013 REVISION 0
DRAWING NO.:	S500EX.dwg