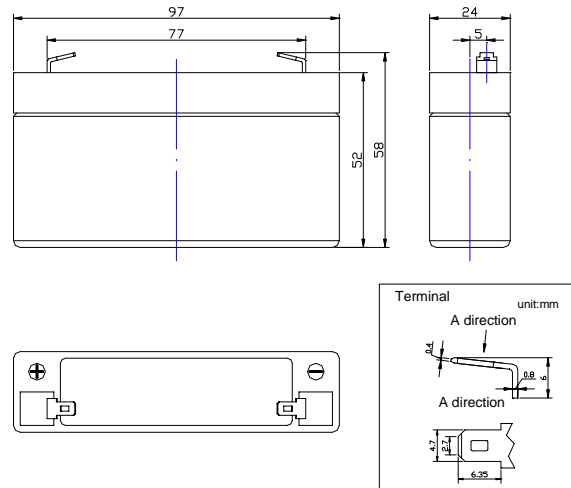


## □ HGL1.2-6



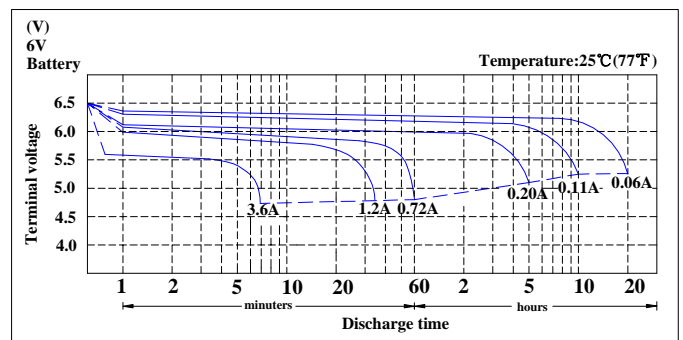
### Specifications

Nominal Voltage		6V
Rated Capacity (20 hour rate)		1.2AH
Dimension	Total Height (with terminals)	58mm(2.28inches)
	Height	52mm(2.05inches)
	Length	97mm(3.82inches)
	Width	24mm(0.94inches)
Weight		Approx.0.31kg (0.68lbs)

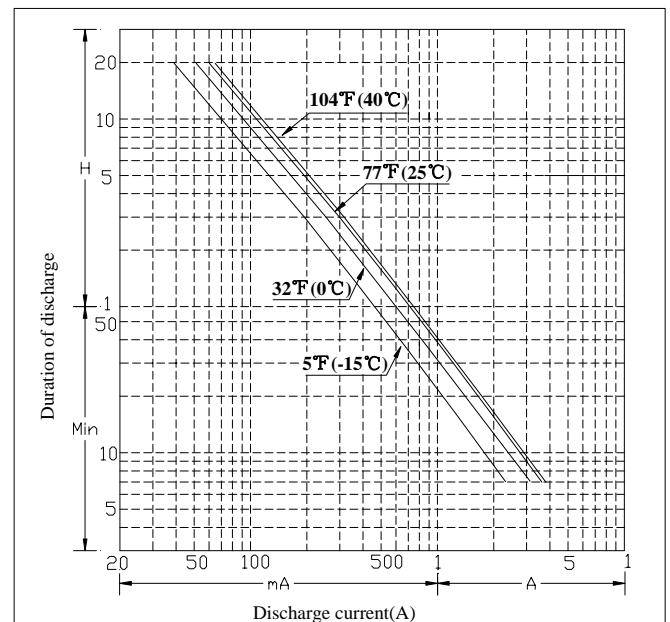
### Characteristics

Capacity 77°F (25°C)	20 hour rate (60mA to 5.25Volts)	1.2AH
	10 hour rate (110mA to 5.25Volts)	1.1AH
	5 hour rate (200mA to 5.1Volts)	1.0AH
	1 hour rate (720mA to 4.8Volts)	0.72AH
Internal Resistance	Full charged 77°F (25°C)	39m Ω
Standard Terminal	F1	
Capacity affected by Temperature (20 hour rate)	104°F (40°C)	102%
	77°F (25°C)	100%
	32°F (0°C)	85%
	5°F (-15°C)	65%
Self-Discharge 77°F (25°C)	Capacity after 3 month storage	91%
	Capacity after 6 month storage	82%
	Capacity after 12 month storage	64%
Max. Discharge Current 77°F (25°C)	18A (5s)	
Maximum Charge Current(A)	240mA	
Charging (Constant Voltage)	Cycle	7.25V~7.45V/77°F (25°C)
	Float	6.8V~6.9V/77°F (25°C)
Temperature compensation coefficient of charging voltage (mV/°C/cell)	Cycle	-4mV/°C/cell
	Float	-3mV/°C/cell

### Discharge characteristics 77°F (25°C)



### Duration of discharge vs. Discharge current



### Constant Current Discharge Rating Amperes @ 77°F (25°C)

Cut off voltage V/cell	15M	30M	45M	1H	2H	3H	5H	8H	10H	12H	20H
1.75V	1.96	1.19	0.85	0.69	0.39	0.29	0.20	0.137	0.112	0.095	0.060

**Note** The above data are average values, and can be obtained with 3 charge/discharge cycles. These are not minimum values.

FULLRIVER

HGL BATTERIES

This information is generally descriptive only and is not intended to make or imply any representation, guarantee or warranty with respect to any cells and batteries. Cell and battery designs/specification are subject to modification without notice. Contact Fullriver for the latest information.